

# Interreg IV A (2 Seas)

## Welcome to Southampton

**Dawn Baxendale**

Director, Economic Development  
Southampton City Council



# Tackling Social Exclusion

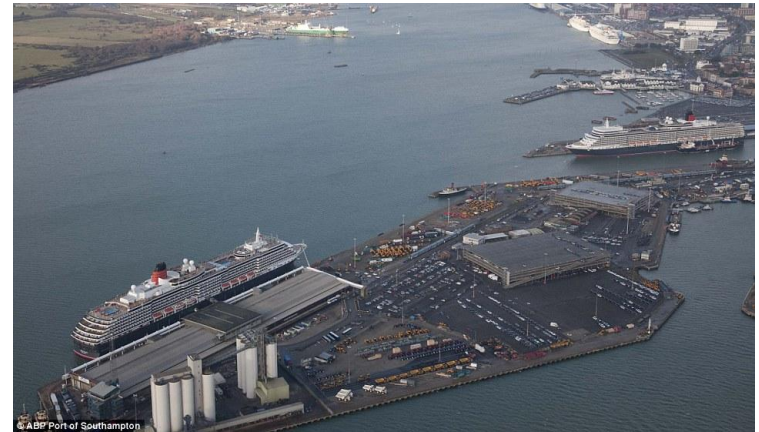
An inclusive economy needs to;

- Create jobs for people at risk of social exclusion
- Ensure services are delivered that respond to peoples needs
- Create sustainable growth across the economy



## Three aims of the programme have been to;

- Examine the most important factors shaping social inclusion in a trans-national context
- Bring together professionals who work to combat social exclusion
- Test innovative methods of reducing social exclusion





# Southampton's projects focussed on key excluded groups in the City



Employment and Training Programmes for;

- Clients with Learning Disabilities
- Care Leavers
- Young Offenders

And

Removing barriers to Employment  
(Beat the Credit Crunch)

## Action Research – ‘Beat the Credit Crunch’

- Residents concerns focussed on; fuel bills, training, health, money advice and work
- Common poverty-related issues included; fuel and food costs, debt and affording childcare
- The transition from benefits into work created financial strains, and lead some residents into debt
- Services to socially excluded residents need to be flexible and responsive – we need to understand the customer experience and the customer journey better, as ‘one size does not fit all’

# Conference Objectives



- Recognition of common challenges
- Share learning and knowledge
- Explore methods of improving access to the labour market for those most disadvantaged
- Build and maintain effective links and partnerships to combat poverty and social exclusion

